



NRNA TREASURY BOOK 2024

मासिक, त्रैमासिक तथा वार्षिक प्रकाशन

NOVEMBER 2024



Monthly Cash and Bank Balance Report

For the monthly of November 2024

A. Cash and Bank Balance

S.N	Bank Name	Account Name	Opening Balance (NPR) as on 01 Nov 2024	Income/Deposit (NPR)	Withdrawal/ Payment (NPR)	Closing Balance (NPR) as on 30 Nov 2024
1	Sanima Bank Limited, Teku Branch	NRNA	12,796.35	259,031.79	265,000.00	6,828.14
2	Sanima Bank Limited, Teku Branch	NRNA Secretariat	163,221.62	1,238,743.96	1,399,630.02	2,335.56
3	Sanima Bank Limited, Teku Branch	NRNA Emergency Fund	3,192,282.03	492,489.28	3,683,232.16	1,539.15
4	Sanima Bank Limited, Teku Branch	NRNA Endowment Fund	124,690.43	26,588.73	-	151,279.16
5	Sanima Bank Limited, Teku Branch	NRNA Women Welfare Fund	2,947,673.94	3,129.12	2,948,000.00	2,803.06
6	Sanima Bank Limited, Teku Branch	NRNA Youth Welfare Fund	876,481.91	929.69	875,000.00	2,411.60
7	Sanima Bank Limited, Teku Branch	NRNA Blood TS Fund	25,076.28	25.57	24,000.00	1,101.85
8	Sanima Bank Limited, Teku Branch	NRNA Foreign Currency (ILO Project)	20,144.28	13.53	18,984.29	1,173.52
9	Global IME Bank (BOK)	NRNA Charity Fund	2,401,054.03	1,547,000.00	16.95	3,948,037.08
10	Machhapuchhre Bank	NRNA Foreign Employment Relief Fund	3,886,896.37	-	-	3,886,896.37
11	Prabhu Bank	NRNA Relief fund	31,030.98	-	-	31,030.98
12	NIC Asia Bank Ltd.	NRNA	9,676.87	-	-	9,676.87
13	Mega Bank Ltd.	Non Resident Nepali Association	485,364.79	-	-	485,364.79
14	Siddhartha Bank Ltd.	NRNA Foreign Employment Relief Fund	338,313.44	63,142.54	-	401,455.98
15	Nepal Investment Bank Ltd.	NRNA	33,486,609.63	4,235,388.99	2,140,067.29	35,581,931.33
16	Nepal Investment Bank Ltd.(Dollar)	NRNA	1,727,558.63	69,874.29	4,895.52	1,792,537.40
17	Nabil Bank Ltd (NPR Account)	Non Resident Nepali Association	102,036.89	-	-	102,036.89
18	Nabil Bank Ltd (Dollar Account)	Non Resident Nepali Association	281,824.69	-	-	281,824.69
A.	Total Bank Balance (A)		50,112,733.16	7,936,357.49	11,358,826.23	46,690,264.42
B.	Cash Balance (Petty Cash) (B)		10,000.00	-	-	10,000.00
	Total Cash and Bank Balance (A +B)		50,122,733.16	7,936,357.49	11,358,826.23	46,700,264.42

C. Investment (Fixed Deposit)

S.N	Bank Name	Opening Balance (NPR) as on 01 Nov 2024	Income/Deposit (NPR)	Withdrawal/ Expenses (NPR)	Closing Balance (NPR) as on 30 Nov 2024
1	Sanima Bank Ltd, Endowment Fund	6,049,000.00	-	-	6,049,000.00
2	Sanima Bank Ltd, Endowment Fund	205,000.00	-	-	205,000.00
3	Bank of Kathmandu, NRNA Charity Fund	10,000,000.00	-	-	10,000,000.00
4	MBL- NRNA Foreign Employment Fund	10,000,000.00	-	-	10,000,000.00
5	Siddhartha Bank - NRNA Foreign Employment Fund	8,500,000.00	-	-	8,500,000.00
6	Siddhartha Bank - NRNA Foreign Employment Fund	7,300,000.00	-	-	7,300,000.00
7	Nepal Investment Bank- NRNA	8,500,000.00	-	-	8,500,000.00
	Total Fixed Deposit (C)	50,554,000.00	-	-	50,554,000.00
	Total Bank & Cash with FD (A+B+C)	100,676,733.16	7,936,357.49		97,254,264.42

D. Income as per shown at bank for the month of November 2024

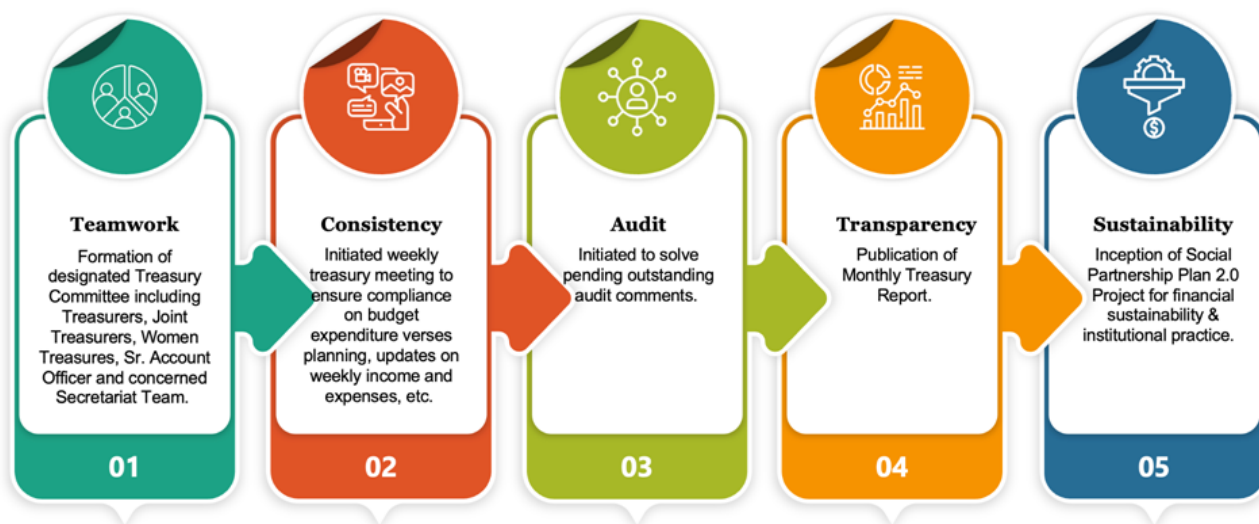
S.N	Particulars	Amount
1	Interest Income	8,620.24
2	Interest Income from FD	89,598.86
3	ICC Membership Fee 23-25	300,000.00
4	Donation - Speech competition 2024	99,010.57
5	Registration - Speech Competition 2024	36,000.00
6	Donation - Flood & Landslide 2081	838,603.76
7	Sponsorship Fee-AGM & Global Conclave 2024	582,378.42
8	Registration - AGM & Global Conclave 2024	129,660.00
9	Donation- Pemba Rita Sherpa	100,000.00
10	Reimbursement amount of advance and airfare	174,501.35
	Total Income (D)	2,358,373.20

D1. Expenses as per shown at bank for the month of November 2024

S.N	Particulars	Amount
1	Payment of Staff PF and CIT	247,648.42
2	TDS Payable	134,375.54
3	AGM and Global Conclave 2024 Expenses	91,290.00
4	Flood & Landslide 2081 Expnses	240,490.00
5	Earthquake 2080 Expenses (Jajarkot)	2,809.80
6	Payment to Erika Gurung (Sports Academy)	25,000.00
7	Secretariat Expenses	165,412.98
8	Salary Advance	220,000.00
9	Payment to Store on the Door (Flood & Landslide 2081)	1,081,974.30
10	Bank Charge	1,615.23
11	Payment to T. R. Panta (Flood & Landslide 2081)	743,631.52
12	Payment to OM Medical & Surgical (Flood & Landslide 2081)	203,508.26
13	Partial Payment to Vogue Advertising & Event Management	1,000,000.00
14	Payment to KTM Security Service Pvt. Ltd.	135,019.47
15	Partial Payment to Soaltee Hotel Ltd	1,361,000.00
16	Charity Works- Pemba Rita Sherpa	100,000.00
17	Webhosting expenses	27,066.42
	Total Expense (D)	5,780,841.94

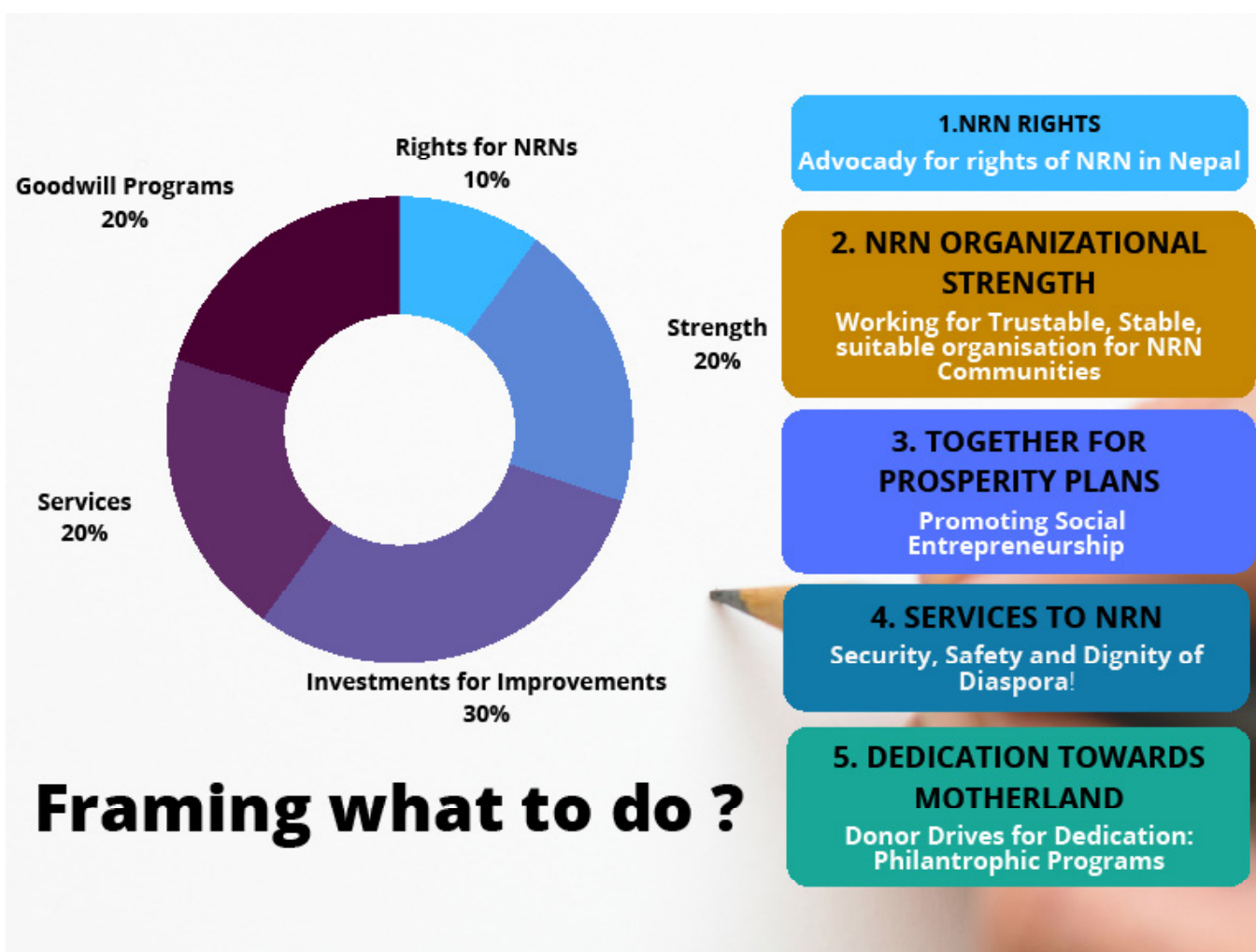
E. Internal Fund Transfer

S.No.	Particulars (Internal Fund Received)	Amount (NPR)	S.No.	Particulars (Internal Fund Payment)	Amount (NPR)
1	Fund Received from NRNA Blood Transfusion fund to NIMB - NRNA	24,000.00	1	Fund Transfer from NRNA Blood Transfusion fund to NIMB - NRNA	24,000.00
2	Fund Received from NRNA Women Welfare fund to NIMB - NRNA	2,948,000.00	2	Fund Transfer from NRNA Women Welfare fund to NIMB - NRNA	2,948,000.00
3	Fund Received from NRNA Youth Welfare Fund to Sanima - NRNA Secretariat	875,000.00	3	Fund Transfer from NRNA Youth Welfare Fund to Sanima - NRNA Secretariat	875,000.00
4	Fund Received from NRNA to Sanima - NRNA Secretariat	164,000.00	4	Fund Transfer from NRNA to Sanima - NRNA Secretariat	164,000.00
5	Fund Received from NRNA to NIMB - NRNA Secretariat	101,000.00	5	Fund Transfer from NRNA to NIMB - NRNA Secretariat	101,000.00
6	Fund Received from NRNA Emergency to Global IME - NRNA NRNA Charity Fund	1,447,000.00	6	Fund Transfer from NRNA Emergency to Global - NRNA NRNA Charity Fund	1,447,000.00
7	Fund Received from NRNA Foreign Currency to NIMB - NRNA Dollar A/C	18,984.29	7	Fund Transfer from NRNA Foreign Currency to NIMB - NRNA Dollar A/C	18,984.29
	Total Amount (E)	5,577,984.29		Total Amount	5,577,984.29
	Total Amount including internal fund transfer (D +E)	7,936,357.49		Total Amount including internal fund transfer	11,358,826.23



एनआरएनको प्राथमिकता के, कति र कसरी परिचालित हुने गर्छ ?

एनआरएनको विभिन्न विभागीय र क्षेत्रगत कार्यक्रम लक्षित बजेट विनियोजनलाई सामन्तज्य कायम गर्न प्राथमिकता निर्धारणगरि कोषबाट आर्थिक संकलन तथा प्रवाह गरिने तयारीको चित्रण सम्पूर्ण गैरआवासीय नेपाली बीच नियमित प्रस्तुत गरिने छ । जसले आइसीसी र एनसीसीका हजारौ कार्यकारीहरु तथा लाखौ आवद्ध सदस्यहरु बीच सिनर्जी पैदा गर्ने विश्वास गरिएको छ ।



NRNA Treasury Team



Sudan Thapa
ICC Treasurer
Japan



Tilak Gaire
Joint Treasurer
Portugal



Abhimanyu Basnet
Joint Treasurer
Canada



Krishna Timilsena
Joint Treasurer
UK



Amrita Thapa 'Kanchan'
Joint Treasurer Women
China

Non-Resident Nepali Association
Baluwatar, Kathmandu
Phone : 977- 014511530
Email : info@nrna.org
Website : www.nrna.org